



WIKA Chain
Hoist Test Set:
Model FRKPS
test set for checking
friction clutches on
chain hoists up
to 3,500kg





WIKA Chain Hoist Test Set FRKPS

Friction Clutch Testing up to 3,500Kg

Applications

Friction clutch testing of chain hoists for:

- Inspection and Maintenance Companies
- Wind Turbine Service Companies
- Chain hoist users

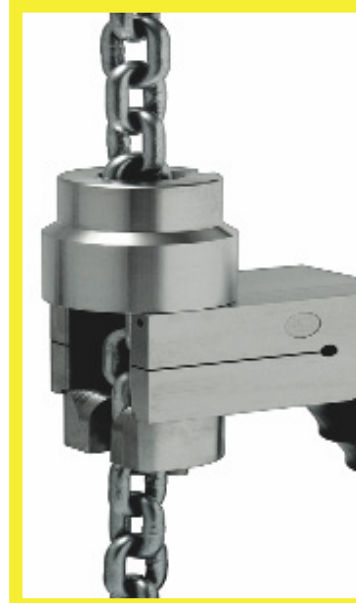
Special Features

- Measuring range of 40 to 3,500Kg SWL
- Simple calibration of friction clutches without the need for test weights.
- Single sensor concept for entire load range
- Maximum / minimum value memory
- Relative linearity error 0.5% F_{nom}



Contents (contained in robust aluminium case):

- Hand-held indicator
- 3 centring sleeves
- Charger
- Optional Peli case
- Force transducer
- 2 chain adaptors
- 10m cable



The FRKPS is used to test the friction clutch on chain hoists up to a SWL of 3,500Kg.

The device consists of a force transducer with chain adaptors and a display unit.

To perform the test, the force transducer is inserted in the chain, travels upwards with it against the base of the chain hoist and thereby blocks the chain.

The force transducer is built as a shear beam and therefore unaffected by parasitic forces and torques. The output signal is carried via cable to the hand-held indicator.

To test all models of chain hoist within the specified load range, two chain adaptors and three centring sleeves are required.

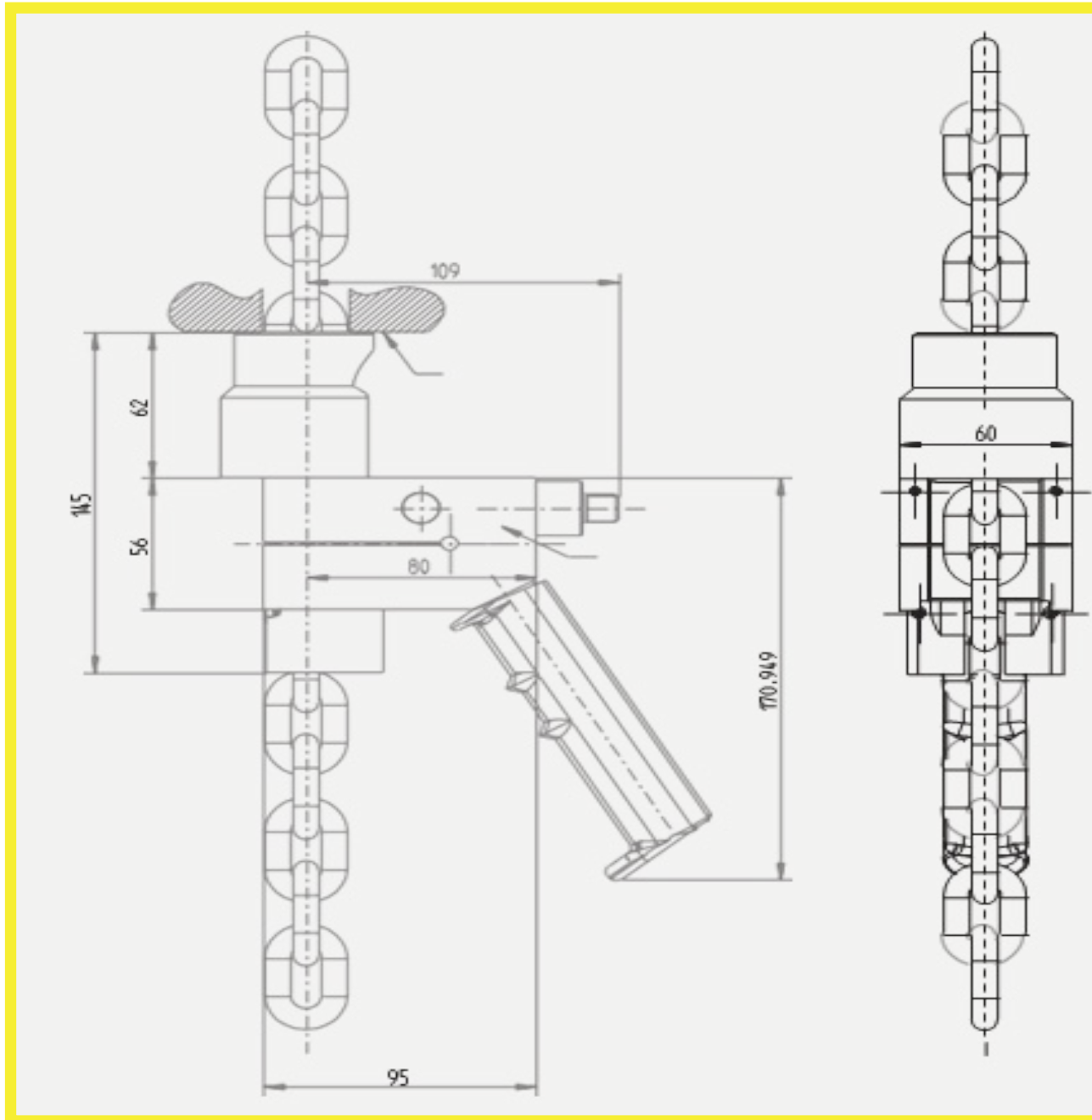
The additional hand-held display has all the necessary functions to process the output signals of sensors and display the measured value directly. The large dot-matrix display makes handling particularly easy.

Testing can be carried out by AAT during routine chain Thorough Examination in accordance with LOLER or maintenance in accordance with PUWER.

The equipment is also available for sale or hire with full support to train your personnel or sub-contractors and support with procedures.



LOGO	DESCRIPTION	COUNTRY
CE	EU declaration of conformity • EMC directive • RoHS directive	European Union
EAC	EAC (Option) • EMC directive	Eurasian Economic Community



DIMENSIONS IN MM

Technical data in accordance with VDI/VDE/DKD 2638

Model FRKPS

Nominal Load F_{nom} Kg	40...3,500
Relative linearity error d_{lin}	$\leq 0.5\%$ F_{nom}
Force Limit FL	20% F_{nom}
Breaking Force FB	$> 300\%$ F_{nom}
Material	Stainless Steel
Rated temperature range	0 ... 80 °C
Operating temperature range BT, G	-20 ... +80 °C
Output signal (rated output) C_{nom}	4 ... 20 mA, 2-wire
Electrical connection	M12 x 1 connector, 4-pin Power supply: AC100-240V 50-60Hz, Output DC12V/450mA incl. cable 10 m
Hand-held indicator	LCD, 5 digits, illuminated
Storage function	Optional 99 data sets (serial number with 12 digits)
Additional display function	MIN, MAX, HOLD, AVG, TARA, LGT
Operating time	8 h (per rechargeable battery)
Chain adapter for chain size acc. EN 818-2	2 pieces (3 x 9 mm up to 11 x 31 mm)
Chain center sleeve	3 pieces
Protection (acc. to IEC/EN 60529)	IP67 Force transducer, IP40 Hand-held indicator
Dimensions (B x H x D)	445 x 165 x 350 mm transport case
Weight	< 10 (set incl. transport case), 7 (force transducers)

Chain dimensions according to EN818-2:2008 (D) – Dimensions in mm

Nominal Size dn	Nominal Size tolerance	Spacing P	Spacing tolerance	Internal width W1min.	External width W2max.	Measuring length of 11 x p	Measuring length of tolerance	Weldet joint Dsmax.	Weight Kg/m
3	± 0.1	9	+0.1/-0.05	3.6	10.2	99	+0.3/-0.15	3.3	0.2
4	± 0.2	12	+0.15/-0.1	4.8	13.6	132	+0.4/-0.2	4.3	0.35
5	± 0.2	15	+0.2/-0.1	6	17	165	+0.5/-0.25	5.4	0.54
6	± 0.2	18	+0.2/-0.1	7.2	20.4	198	+0.6/-0.3	6.5	0.78
7	± 0.3	21	+0.25/-0.15	8.4	23.8	231	+0.7/-0.35	7.5	1.1
8	± 0.3	24	+0.3/-0.15	9.6	27.2	264	+0.8/-0.4	8.6	1.4
9	± 0.4	27	+0.35/-0.15	10.8	30.6	297	+0.95/-0.45	9.7	1.75
10	± 0.4	30	+0.35/-0.15	12	34	330	+1/-0.5	10.7	2.2
11	± 0.4	33	+0.4/-0.2	13.2	37.4	363	+1.2/-0.5	11.8	2.6
12	± 0.5	36	+0.45/-0.2	14.4	40.8	396	+1.25/-0.6	12.9	3.1
13	± 0.5	39	+0.5/-0.25	15.6	44.2	429	+1.35/-0.65	14	3.65
14	± 0.6	42	+0.55/-0.25	16.8	47.6	462	+1.5/-0.7	15.1	4.2
16	± 0.6	48	+0.6/-0.3	19.2	54.4	528	+1.7/-0.8	17.3	5.5
18	± 0.9	54	+0.7/-0.3	21.6	61.2	594	+1.95/-0.95	19.4	7.0
20	± 1.0	60	+0.8/-0.4	24	68	660	+2.2/-1	21.6	8.6
22	± 1.1	66	+0.9/-0.4	26.4	74.8	726	+2.4/-1.1	23.8	10.5

Chain dimensions according to EN818-7:2008 (D) – Dimensions in mm

Nominal Size dn	Nominal Size tolerance	Spacing P	Spacing tolerance	Internal width W1min.	External width W2max.	Measuring length of 11 x p	Measuring length of tolerance	Weldet joint Dsmax.	Weight Kg/m
4	± 0.2	12	+0.15/-0.1	4.8	13.6	132	+0.4/-0.2	4.3	0.35
5	± 0.2	15	+0.2/-0.1	6	17	165	+0.5/-0.25	5.4	0.54
6	± 0.2	18	+0.2/-0.1	7.2	20.4	198	+0.6/-0.3	6.5	0.78
7	± 0.3	21	+0.25/-0.15	8.4	23.8	231	+0.7/-0.35	7.5	1.1
8	± 0.3	24	+0.3/-0.15	9.6	27.2	264	+0.8/-0.4	8.6	1.4
9	± 0.4	27	+0.35/-0.15	10.8	30.6	297	+0.95/-0.45	9.7	1.75
10	± 0.4	30	+0.35/-0.15	12	34	330	+1/-0.5	10.7	2.2
11	± 0.4	33	+0.4/-0.2	13.2	37.4	363	+1.2/-0.5	11.8	2.6
12	± 0.5	36	+0.45/-0.2	14.4	40.8	396	+1.25/-0.6	12.9	3.1
13	± 0.5	39	+0.5/-0.25	15.6	44.2	429	+1.35/-0.65	14	3.65
14	± 0.6	42	+0.55/-0.25	16.8	47.6	462	+1.5/-0.7	15.1	4.2
16	± 0.6	48	+0.6/-0.3	19.2	54.4	528	+1.7/-0.8	17.3	5.5
18	± 0.9	54	+0.7/-0.3	21.6	61.2	594	+1.95/-0.95	19.4	7.0
20	± 1.0	60	+0.8/-0.4	24	68	660	+2.2/-1	21.6	8.6
22	± 1.1	66	+0.9/-0.4	26.4	74.8	726	+2.4/-1.1	23.8	10.5
22	± 1.1	66	+0.9/-0.4	26.4	74.8	726	+2.4/-1.1	23.8	10.5



Thank you for taking the time to read AAT's
information booklet. For further information
please contact AAT at:

+44(0)1292 263 581 | info@aatsafety.co.uk

Or online at:
www.aatsafety.co.uk

